

Monthly Weather Summary in Thailand August 2021

The periodically moderate to rather active southwest monsoon prevailing over the Andaman Sea, Thailand and the Gulf of Thailand throughout the month accompanied with the monsoon trough lay across Myanmar, Laos and Cambodia towards the low pressure cell in the Gulf of Tonkin during early month and it moved southwards to lie over upper Thailand during late month. Besides, the low pressure covered upper Vietnam and the low pressure cell over the lower southern Thailand and Malaysia during the middle of the month. These caused periodically abundant rainfall over Thailand and heavy to very heavy rainfall in some areas almost the month and flash flood in several places. However, the southwest monsoon which prevailed over Thailand was weakened sometime within the period causing decreasing rainfall over Thailand. Monthly rainfall was above normal in most parts of Thailand i.e. central part 11.9 mm (7%), eastern part 14.0 mm (5%), southern part (east coast) 35.3 mm (28%) and southern part (west coast) 87.5 mm (22%) while it was below normal in northern part 21.6 mm (10%), northeastern part 108.7 mm (41%). The average total rainfall of 140.6 millimeters was measured over Thailand in this month with 5 percent lower than normal. The mean temperature in August 2021 were above normal in most regions except for in southern part (west coast) where the temperature was 0.2 degree Celsius lower than normal, resulting in the average monthly temperatures over Thailand in this month was 28.4 degree Celsius where higher than normal temperature by 0.8 degree Celsius.

1 – 10 August: The monsoon trough lay across Myanmar, Laos and upper Vietnam during the first half of the period, as a result, the southwest monsoon which prevailed over the Andaman Sea, Thailand and the Gulf of Thailand was rather active during this period. In addition, the low pressure cell covered Laos and upper Vietnam on the last day of the period. These caused isolated to scattered rain over upper Thailand throughout the period with heavy to very heavy rainfall in some places especially in northern part that received fairly widespread rain during the first half of the period. The maximum daily rainfall in upper Thailand was 117.0 millimeters at amphoe Na Yoong in Udon Thaini province on August 10. Flash flooding was reported at Chiang Mai province on August 2, at Kanchanaburi province on August 7. In southern part, fairly widespread rain was reported along east coast during the first half of the period then isolated to scattered rain with heavy to very heavy rainfall in some place. For west coast, there was fairly widespread rain with isolated heavy to very heavy rainfall during early and late periods while isolated to scattered rain during mid-period. The maximum daily rainfall of 92.4 millimeters was measured at Amphoe Mueang in Ranong province on August 2 and gusty wind was reported at Pattani province on August 1, at Ranong province on August 2 and at Suratthani province on August 10.

11 – 20 August: The southwest monsoon prevailed over the Andaman Sea, Thailand and the Gulf of Thailand throughout the period and weakened during the second half of the period. In addition, the low pressure cell covered upper Vietnam during early and late periods and the low pressure cell over the lower southern Thailand and the coast of Malaysia during late period. These conditions caused plentiful of rainfall in upper Thailand mainly during the first half of the period that received fairly widespread rain with heavy rainfall in several areas and very heavy rainfall in some areas during this period and then decreasing rainfall with isolated to scattered rain with heavy rainfall in some areas. The highest rainfall in upper Thailand was 129.5 millimeters at Amphoe Khong Chiam in Ubon Ratchathani province on the August 13. Flash flood was reported at Chiang Mai province on August 11 and Chiang Rai province on August 11 and 14. Flash flood with land-slide occurred at Chiang Rai province on August 16 and gusty wind at Udon Thani province on August 12, at Trat province on August 18 and Singburi province on August 20. In southern Thailand, plentiful of rainfall especially fairly widespread rain along west coast with heavy to very heavy rainfall then decreasing rainfall to isolated to scattered rain with heavy rainfall in some areas. The highest daily rainfall was 164.2 millimeters at Amphoe Suk Samran in Ranong province on August 11, and flash flood occurred at Nakhon Si Thammarat province on August 17 and at Surat Thani province on August 20.

21 – 31 August: The moderate southwest monsoon prevailed over the Andaman Sea, Thailand and the Gulf of Thailand during mid and late periods. In addition, the monsoon trough lay across lower northern, upper central and northeastern parts toward the low pressure cell covering lower northeastern part during mid-period and then it moved southwards to lie over central, eastern and lower northeastern parts toward the low pressure cell covering the lower South China Sea. After that, the mentioned low pressure cell moved to cover the coast of lower Vietnam and Cambodia, respectively. These conditions caused fairly widespread rain over upper Thailand mainly during mid and late periods with isolated heavy to very heavy rainfall in some areas especially in eastern part that received heavy to very heavy in several areas. Flash flood occurred at Phayao province on August 23 and 24, at Chiang Mai province on August 24, at Rayong province on August 26 and 27, at Chonburi, Chanthaburi and Sa Kaeo provinces on August 27, at Nakhon Ratchasima province on August 28, at Prachinburi province on August 26, 27 and 29, at Kamphaeng Phet and Samut Prakan provinces on August 29. The highest rainfall in upper Thailand was 200.0 millimeters at Amphoe Khlung in Chanthaburi province on August 25. In southern Thailand, isolated to scattered rain was observed along east coast with heavy to very heavy rainfall in some areas during early and mid-periods then increasing rainfall to fairly widespread rain with heavy rainfall in several areas. While, west Southern part received fairly widespread rain almost the period and heavy rainfall in several areas with very heavy rainfall in some areas mainly during mid-period. The highest daily rainfall was 151.1 millimeters at Amphoe Suk Samran in Ranong province on August 24.

Note : 1. Rainfall, temperatures and natural disasters in this report were updated up to September 6, 2021

Climatological Center
Meteorological Development Division
Meteorological Department

Monthly Current Report
Rainfall and Accumulative Rainfall
August 2021

Northern Thailand

| Station | Temperature (°c) | | Rainfall (mm) | | Accumulative rainfall (mm) Since 1 January | |
|----------------|-------------------|-----------------------------|---------------|-----------------------------|---|-----------------------------|
| | Mean | Above or below normal | Actual | Above or below normal | Actual | Above or below normal |
| Chiang Rai | 27.0 | 0.5 | 415.6 | 57.2 | 1220.3 | 11.8 |
| Mae Hong Son | 27.7 | 0.8 | 128.5 | -110.8 | 737.7 | -185.9 |
| Phayao | 27.6 | 0.9 | 243.3 | 39.3 | 859.1 | 96.5 |
| Chiang Mai | 28.5 | 1.7 | 108.0 | -108.9 | 656.2 | -75.6 |
| Tha Wang Pha | 28.0 | 1.1 | 236.3 | -61.5 | 1117.0 | 42.4 |
| Nan | 28.6 | 1.3 | 127.4 | -145.8 | 777.6 | -156.0 |
| Lamphun | 28.6 | 1.3 | 169.6 | -3.1 | 649.6 | 15.6 |
| Lampang | 28.6 | 1.2 | 237.3 | 51.0 | 665.2 | -33.9 |
| Mae Sariang | 27.0 | 0.8 | 219.3 | -1.1 | 938.7 | 124.9 |
| Phrae | 28.6 | 1.2 | 178.6 | -26.9 | 924.7 | 123.8 |
| Uttaradit | 29.2 | 1.2 | 189.4 | -74.0 | 836.8 | -143.8 |
| Bhumibol Dam | 28.7 | 0.6 | 174.9 | 62.9 | 1008.2 | 428.7 |
| Tak | 28.7 | 0.8 | 246.5 | 130.7 | 1054.8 | 468.1 |
| Mae Sot | 26.9 | 1.3 | 351.4 | 29.7 | 1598.1 | 447.6 |
| Umphang | 25.2 | 0.9 | 314.4 | 66.0 | 1186.9 | 159.3 |
| Phitsanulok | 29.1 | 1.0 | 56.6 | -191.0 | 685.6 | -177.8 |
| Lom Sak | 28.3 | 1.0 | 114.5 | -83.6 | 674.6 | -68.0 |
| Phetchabun | 28.5 | 1.2 | 148.0 | -51.0 | 797.5 | -20.4 |
| Wichian Buri | 28.8 | 0.7 | 202.7 | -6.5 | 773.8 | -44.5 |
| Kamphaeng Phet | 28.8 | 1.0 | 166.6 | -3.9 | 657.5 | -137.9 |
| Over the area | 28.1 | 1.0 | 201.4 | -21.6 -10% | 891.0 | 43.6 5% |

Northeastern Thailand

| Station | Temperature (°c) | | Rainfall (mm) | | Accumulative rainfall (mm) Since 1 January | |
|-------------------|-------------------|-----------------------------|---------------|-----------------------------|---|-----------------------------|
| | Mean | Above or below normal | Actual | Above or below normal | Actual | Above or below normal |
| Nong Khai | 29.4 | 1.9 | 181.2 | -142.0 | 1146.5 | -94.1 |
| Loei | 28.3 | 1.2 | 121.6 | -63.3 | 745.3 | -108.6 |
| Udon Thani | 29.1 | 1.3 | 124.0 | -161.1 | 850.3 | -225.3 |
| Nakhon Phanom | 28.7 | 1.7 | 241.4 | -338.9 | 1693.4 | -251.7 |
| Sakon Nakhon | 28.9 | 1.5 | 158.4 | -199.5 | 1070.0 | -255.8 |
| Mukdahan | 29.0 | 1.7 | 118.1 | -232.6 | 1176.7 | 24.9 |
| Khon Kaen | 28.4 | 0.7 | 141.7 | -74.7 | 724.2 | -152.9 |
| Kosum Phisai | 29.4 | 1.4 | 132.4 | -99.5 | 764.0 | -126.5 |
| Roi Et | 29.3 | 1.4 | 242.1 | -10.1 | 828.0 | -169.6 |
| Chaiyaphum | 28.5 | 0.9 | 145.6 | -50.6 | 676.5 | -70.6 |
| Ubon Ratchathani | 29.1 | 1.5 | 295.2 | -8.1 | 1147.3 | 6.1 |
| Tha Tum | 28.9 | 0.7 | 96.9 | -131.0 | 711.6 | -265.0 |
| Surin | 28.8 | 1.2 | 143.8 | -112.4 | 921.4 | -96.6 |
| Nakhon Ratchasima | 29.2 | 1.1 | 79.2 | -78.0 | 669.2 | -1.1 |
| Chok Chai | 28.7 | 0.8 | 193.6 | 40.1 | 644.6 | -21.7 |
| Nang Rong | 28.4 | 0.6 | 105.0 | -76.7 | 914.4 | 134.6 |
| Over the area | 28.9 | 1.2 | 157.5 | -108.7 -41% | 917.7 | -104.7 -10% |

- NOTES :
- 1) Mean temperature is the average of daily dry-bulb temperature
 - 2) "T" is trace, rainfall amount less than 0.1 mm.
 - 3) "blank" is incomplete data.
 - 4) Temperature and rainfall are preliminary data.

Monthly Current Report
Rainfall and Accumulative Rainfall
August 2021

Central Thailand

| Station | Temperature (°c) | | Rainfall (mm) | | Accumulative rainfall (mm) Since 1 January | |
|--------------------|-------------------|-----------------------------|---------------|-----------------------------|---|-----------------------------|
| | Mean | Above or below normal | Actual | Above or below normal | Actual | Above or below normal |
| Nakhon Sawan | 29.5 | 1.1 | 192.8 | 14.5 | 778.8 | 51.5 |
| Bua Chum | 29.0 | 1.0 | 249.1 | 79.9 | 720.6 | 38.9 |
| Lop Buri | 29.2 | 0.9 | 113.2 | -37.7 | 731.4 | 63.1 |
| Suphan Buri | 29.6 | 1.1 | 155.6 | 37.2 | 715.4 | 210.9 |
| Thong Pha Phum | 27.3 | 1.0 | 230.1 | -113.6 | 1352.4 | 9.7 |
| Kanchanaburi | 29.5 | 1.1 | 122.2 | 23.9 | 628.7 | 66.8 |
| Bangkok Airport | 29.2 | 0.4 | 218.7 | 47.8 | 710.6 | -144.4 |
| Bangkok Metropolis | 29.5 | 0.7 | 262.2 | 42.9 | 1034.6 | 68.6 |
| Over the area | 29.1 | 0.9 | 193.0 | 11.9 7% | 834.1 | 45.7 6% |

Eastern Thailand

| Station | Temperature (°c) | | Rainfall (mm) | | Accumulative rainfall (mm) Since 1 January | |
|---------------|-------------------|-----------------------------|---------------|-----------------------------|---|-----------------------------|
| | Mean | Above or below normal | Actual | Above or below normal | Actual | Above or below normal |
| Prachin Buri | 29.2 | 0.9 | 264.6 | -93.9 | 1045.4 | -230.9 |
| Kabin Buri | 28.2 | 0.5 | 237.3 | -53.1 | 1181.7 | 75.7 |
| Aranyaprathet | 29.2 | 1.4 | 189.1 | -19.5 | 997.7 | 119.7 |
| Chon Buri | 29.9 | 0.9 | 148.3 | -5.8 | 843.7 | 80.2 |
| Ko Sichang | 28.5 | -0.2 | 226.6 | 89.8 | 685.5 | 12.0 |
| Pattaya | 28.8 | 0.4 | 323.1 | 225.5 | 889.3 | 279.8 |
| Sattahip | 29.1 | 0.3 | 334.9 | 225.9 | 1530.1 | 828.9 |
| Rayong | 29.0 | 0.2 | 226.7 | 94.4 | 977.3 | 100.4 |
| Chanthaburi | 28.3 | 0.8 | 618.6 | 121.4 | 2377.1 | 239.4 |
| Khlong Yai | 27.3 | 0.3 | 595.8 | -444.6 | 3097.3 | -595.2 |
| Over the area | 28.8 | 0.6 | 316.5 | 14.0 5% | 1362.5 | 90.9 7% |

- NOTES :
- 1) Mean temperature is the average of daily dry-bulb temperature
 - 2) "T" is trace, rainfall amount less than 0.1 mm.
 - 3) "blank" is incomplete data.
 - 4) Temperature and rainfall are preliminary data.

Monthly Current Report
Rainfall and Accumulative Rainfall
August 2021

Southern Thailand, east coast

| Station | Temperature (°c) | | Rainfall (mm) | | Accumulative rainfall (mm) Since 1 January | |
|---------------------|-------------------|-----------------------------|---------------|-----------------------------|---|-----------------------------|
| | Mean | Above or below normal | Actual | Above or below normal | Actual | Above or below normal |
| Phetchaburi | 28.7 | 0.1 | 94.1 | 1.8 | 454.8 | 4.9 |
| Hua Hin | 28.9 | 0.4 | 113.3 | 42.1 | 554.6 | 75.2 |
| Prachuap Khiri Khan | 28.7 | 0.9 | 83.8 | -15.3 | 459.5 | -135.5 |
| Chumphon | 27.5 | 0.4 | 229.1 | 21.6 | 906.8 | -124.8 |
| Surat Thani | 27.3 | 0.3 | 72.3 | -67.3 | 588.3 | -149.6 |
| Ko Samui | 28.5 | 0.3 | 283.7 | 172.8 | 657.6 | -154.1 |
| Nakhon Si Thammarat | 27.9 | 0.1 | 202.9 | 73.1 | 890.8 | -58.2 |
| Songkhla | 28.4 | 0.2 | 148.1 | 38.7 | 805.9 | 123.8 |
| Hat Yai Airport | 27.5 | 0.1 | 111.2 | -1.8 | 792.4 | 36.0 |
| Pattani Airport | 28.0 | 0.5 | 140.2 | 6.2 | 805.9 | 89.0 |
| Narathiwat | 27.6 | 0.2 | 274.2 | 115.9 | 927.0 | 23.9 |
| Over the area | 28.1 | 0.3 | 159.4 | 35.3 28% | 713.1 | -24.6 -3% |

Southern Thailand, west coast

| Station | Temperature (°c) | | Rainfall (mm) | | Accumulative rainfall (mm) Since 1 January | |
|----------------|-------------------|-----------------------------|---------------|-----------------------------|---|-----------------------------|
| | Mean | Above or below normal | Actual | Above or below normal | Actual | Above or below normal |
| Ranong | 26.8 | 0.0 | 907.5 | 118.4 | 3202.1 | 402.5 |
| Takua Pa | 27.0 | -0.4 | 543.3 | -1.7 | 2705.4 | 463.7 |
| Phuket | 28.2 | 0.1 | 277.5 | -9.3 | 1139.7 | -148.7 |
| Phuket Airport | 27.9 | -0.1 | 627.3 | 297.5 | 1880.3 | 433.0 |
| Ko Lanta | 27.6 | -0.6 | 355.0 | 50.8 | 1411.0 | 92.8 |
| Trang Airport | 27.3 | 0.3 | 306.5 | 31.4 | 1361.8 | 133.2 |
| Satun | 27.3 | -0.1 | 385.2 | 125.9 | 1692.9 | 391.2 |
| Over the area | 27.4 | -0.2 | 486.0 | 87.5 22% | 1913.3 | 252.5 15% |

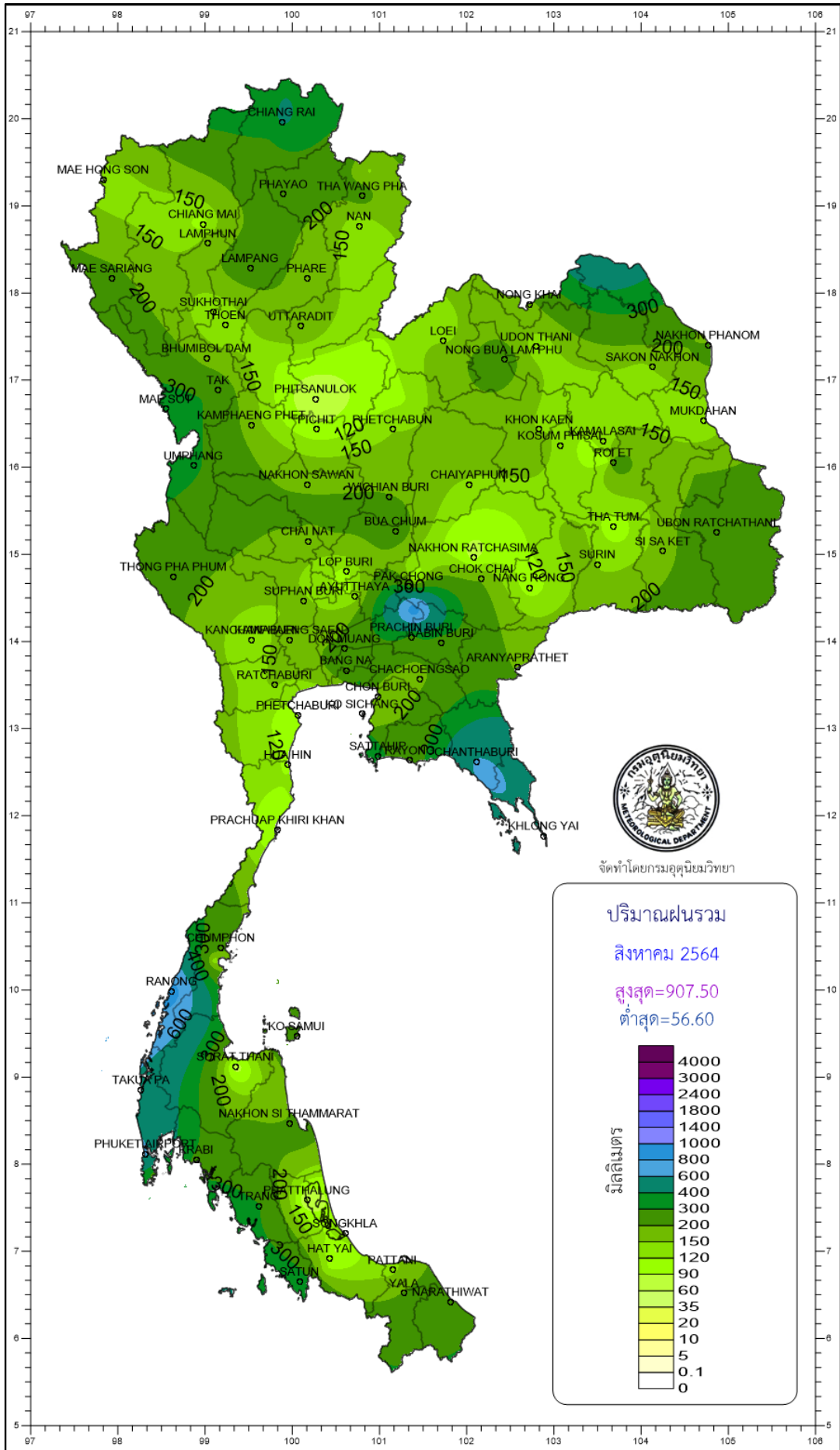
- NOTES :
- 1) Mean temperature is the average of daily dry-bulb temperature
 - 2) "T" is trace, rainfall amount less than 0.1 mm.
 - 3) "blank" is incomplete data.
 - 4) Temperature and rainfall are preliminary data.

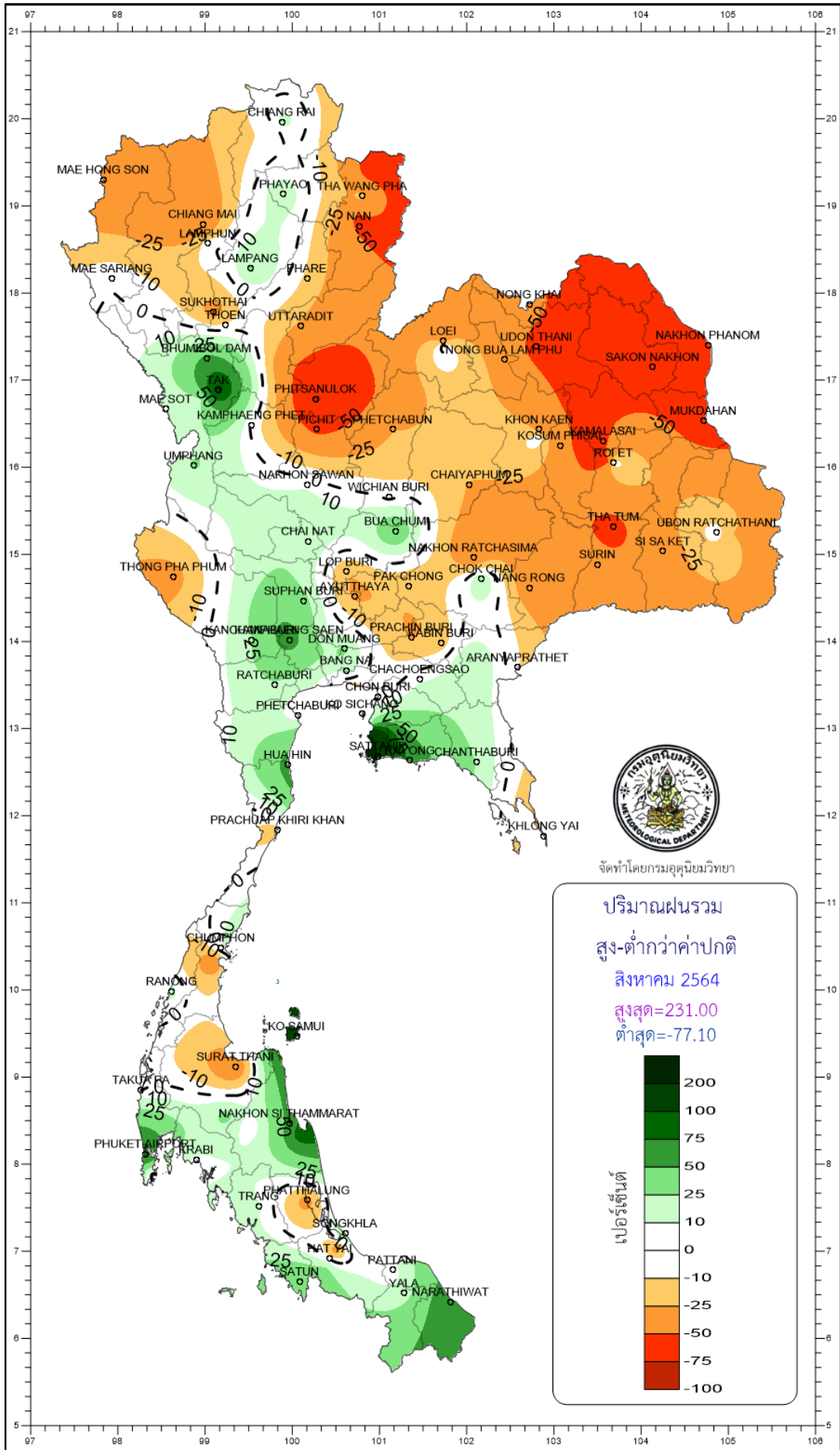
Monthly Current Report

August 2021

| Region | Station | Temperature (°c) | | Rainfall (mm) | | Accumulative rainfall (mm) Since 1 January | |
|-----------------------|---------------------|------------------|-----------------------------|---------------|-----------------------------|---|-----------------------------|
| | | Mean | Above or below normal | Actual | Above or below normal | Actual | Above or below normal |
| North | Chiang Rai | 27.0 | 0.5 | 415.6 | 57.2 | 1220.3 | 11.8 |
| | Mae Hong Son | 27.7 | 0.8 | 128.5 | -110.8 | 737.7 | -185.9 |
| | Phayao | 27.6 | 0.9 | 243.3 | 39.3 | 859.1 | 96.5 |
| | Chiang Mai | 28.5 | 1.7 | 108.0 | -108.9 | 656.2 | -75.6 |
| | Tha Wang Pha | 28.0 | 1.1 | 236.3 | -61.5 | 1117.0 | 42.4 |
| | Nan | 28.6 | 1.3 | 127.4 | -145.8 | 777.6 | -156.0 |
| | Lamphun | 28.6 | 1.3 | 169.6 | -3.1 | 649.6 | 15.6 |
| | Lampang | 28.6 | 1.2 | 237.3 | 51.0 | 665.2 | -33.9 |
| | Mae Sariang | 27.0 | 0.8 | 219.3 | -1.1 | 938.7 | 124.9 |
| | Phrae | 28.6 | 1.2 | 178.6 | -26.9 | 924.7 | 123.8 |
| | Uttaradit | 29.2 | 1.2 | 189.4 | -74.0 | 836.8 | -143.8 |
| | Bhumibol Dam | 28.7 | 0.6 | 174.9 | 62.9 | 1008.2 | 428.7 |
| | Tak | 28.7 | 0.8 | 246.5 | 130.7 | 1054.8 | 468.1 |
| | Mae Sot | 26.9 | 1.3 | 351.4 | 29.7 | 1598.1 | 447.6 |
| | Umphang | 25.2 | 0.9 | 314.4 | 66.0 | 1186.9 | 159.3 |
| | Phitsanulok | 29.1 | 1.0 | 56.6 | -191.0 | 685.6 | -177.8 |
| | Lom Sak | 28.3 | 1.0 | 114.5 | -83.6 | 674.6 | -68.0 |
| | Phetchabun | 28.5 | 1.2 | 148.0 | -51.0 | 797.5 | -20.4 |
| | Wichian Buri | 28.8 | 0.7 | 202.7 | -6.5 | 773.8 | -44.5 |
| | Kamphaeng Phet | 28.8 | 1.0 | 166.6 | -3.9 | 657.5 | -137.9 |
| Northeast | Nong Khai | 29.4 | 1.9 | 181.2 | -142.0 | 1146.5 | -94.1 |
| | Loei | 28.3 | 1.2 | 121.6 | -63.3 | 745.3 | -108.6 |
| | Udon Thani | 29.1 | 1.3 | 124.0 | -161.1 | 850.3 | -225.3 |
| | Nakhon Phanom | 28.7 | 1.7 | 241.4 | -338.9 | 1693.4 | -251.7 |
| | Sakon Nakhon | 28.9 | 1.5 | 158.4 | -199.5 | 1070.0 | -255.8 |
| | Mukdahan | 29.0 | 1.7 | 118.1 | -232.6 | 1176.7 | 24.9 |
| | Khon Kaen | 28.4 | 0.7 | 141.7 | -74.7 | 724.2 | -152.9 |
| | Kosum Phisai | 29.4 | 1.4 | 132.4 | -99.5 | 764.0 | -126.5 |
| | Roi Et | 29.3 | 1.4 | 242.1 | -10.1 | 828.0 | -169.6 |
| | Chaiyaphum | 28.5 | 0.9 | 145.6 | -50.6 | 676.5 | -70.6 |
| | Ubon Ratchathani | 29.1 | 1.5 | 295.2 | -8.1 | 1147.3 | 6.1 |
| | Tha Tum | 28.9 | 0.7 | 96.9 | -131.0 | 711.6 | -265.0 |
| | Surin | 28.8 | 1.2 | 143.8 | -112.4 | 921.4 | -96.6 |
| | Nakhon Ratchasima | 29.2 | 1.1 | 79.2 | -78.0 | 669.2 | -1.1 |
| | Chok Chai | 28.7 | 0.8 | 193.6 | 40.1 | 644.6 | -21.7 |
| Nang Rong | 28.4 | 0.6 | 105.0 | -76.7 | 914.4 | 134.6 | |
| Central | Nakhon Sawan | 29.5 | 1.1 | 192.8 | 14.5 | 778.8 | 51.5 |
| | Bua Chum | 29.0 | 1.0 | 249.1 | 79.9 | 720.6 | 38.9 |
| | Lop Buri | 29.2 | 0.9 | 113.2 | -37.7 | 731.4 | 63.1 |
| | Suphan Buri | 29.6 | 1.1 | 155.6 | 37.2 | 715.4 | 210.9 |
| | Thong Pha Phum | 27.3 | 1.0 | 230.1 | -113.6 | 1352.4 | 9.7 |
| | Kanchanaburi | 29.5 | 1.1 | 122.2 | 23.9 | 628.7 | 66.8 |
| | Bangkok Airport | 29.2 | 0.4 | 218.7 | 47.8 | 710.6 | -144.4 |
| | Bangkok Metropolis | 29.5 | 0.7 | 262.2 | 42.9 | 1034.6 | 68.6 |
| East | Prachin Buri | 29.2 | 0.9 | 264.6 | -93.9 | 1045.4 | -230.9 |
| | Kabin Buri | 28.2 | 0.5 | 237.3 | -53.1 | 1181.7 | 75.7 |
| | Aranyaprathet | 29.2 | 1.4 | 189.1 | -19.5 | 997.7 | 119.7 |
| | Chon Buri | 29.9 | 0.9 | 148.3 | -5.8 | 843.7 | 80.2 |
| | Ko Sichang | 28.5 | -0.2 | 226.6 | 89.8 | 685.5 | 12.0 |
| | Pattaya | 28.8 | 0.4 | 323.1 | 225.5 | 889.3 | 279.8 |
| | Sattahip | 29.1 | 0.3 | 334.9 | 225.9 | 1530.1 | 828.9 |
| | Rayong | 29.0 | 0.2 | 226.7 | 94.4 | 977.3 | 100.4 |
| | Chanthaburi | 28.3 | 0.8 | 618.6 | 121.4 | 2377.1 | 239.4 |
| | Khlong Yai | 27.3 | 0.3 | 595.8 | -444.6 | 3097.3 | -595.2 |
| South (East Coast) | Phetchaburi | 28.7 | 0.1 | 94.1 | 1.8 | 454.8 | 4.9 |
| | Hua Hin | 28.9 | 0.4 | 113.3 | 42.1 | 554.6 | 75.2 |
| | Prachuap Khiri Khan | 28.7 | 0.9 | 83.8 | -15.3 | 459.5 | -135.5 |
| | Chumphon | 27.5 | 0.4 | 229.1 | 21.6 | 906.8 | -124.8 |
| | Surat Thani | 27.3 | 0.3 | 72.3 | -67.3 | 588.3 | -149.6 |
| | Ko Samui | 28.5 | 0.3 | 283.7 | 172.8 | 657.6 | -154.1 |
| | Nakhon Si Thammarat | 27.9 | 0.1 | 202.9 | 73.1 | 890.8 | -58.2 |
| | Songkhla | 28.4 | 0.2 | 148.1 | 38.7 | 805.9 | 123.8 |
| | Hat Yai Airport | 27.5 | 0.1 | 111.2 | -1.8 | 792.4 | 36.0 |
| | Pattani Airport | 28.0 | 0.5 | 140.2 | 6.2 | 805.9 | 89.0 |
| | Narathiwat | 27.6 | 0.2 | 274.2 | 115.9 | 927.0 | 23.9 |
| South (West Coast) | Ranong | 26.8 | 0.0 | 907.5 | 118.4 | 3202.1 | 402.5 |
| | Takua Pa | 27.0 | -0.4 | 543.3 | -1.7 | 2705.4 | 463.7 |
| | Phuket | 28.2 | 0.1 | 277.5 | -9.3 | 1139.7 | -148.7 |
| | Phuket Airport | 27.9 | -0.1 | 627.3 | 297.5 | 1880.3 | 433.0 |
| | Ko Lanta | 27.6 | -0.6 | 355.0 | 50.8 | 1411.0 | 92.8 |
| | Trang Airport | 27.3 | 0.3 | 306.5 | 31.4 | 1361.8 | 133.2 |
| | Satun | 27.3 | -0.1 | 385.2 | 125.9 | 1692.9 | 391.2 |
| | Over the area | 28.4 | 0.8 | 228.0 | -12.9 | 1028.3 | 27.3 |
| | | | | -5% | | 3% | |

- NOTES :
- 1) Mean temperature is the average of daily dry-bulb temperature
 - 2) "T" is trace, rainfall amount less than 0.1 mm.
 - 3) "blank" is incomplete data.
 - 4) Temperature and rainfall are preliminary data.





จัดทำโดยกรมอุตุนิยมวิทยา

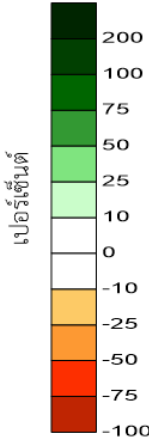
ปริมาณฝนรวม

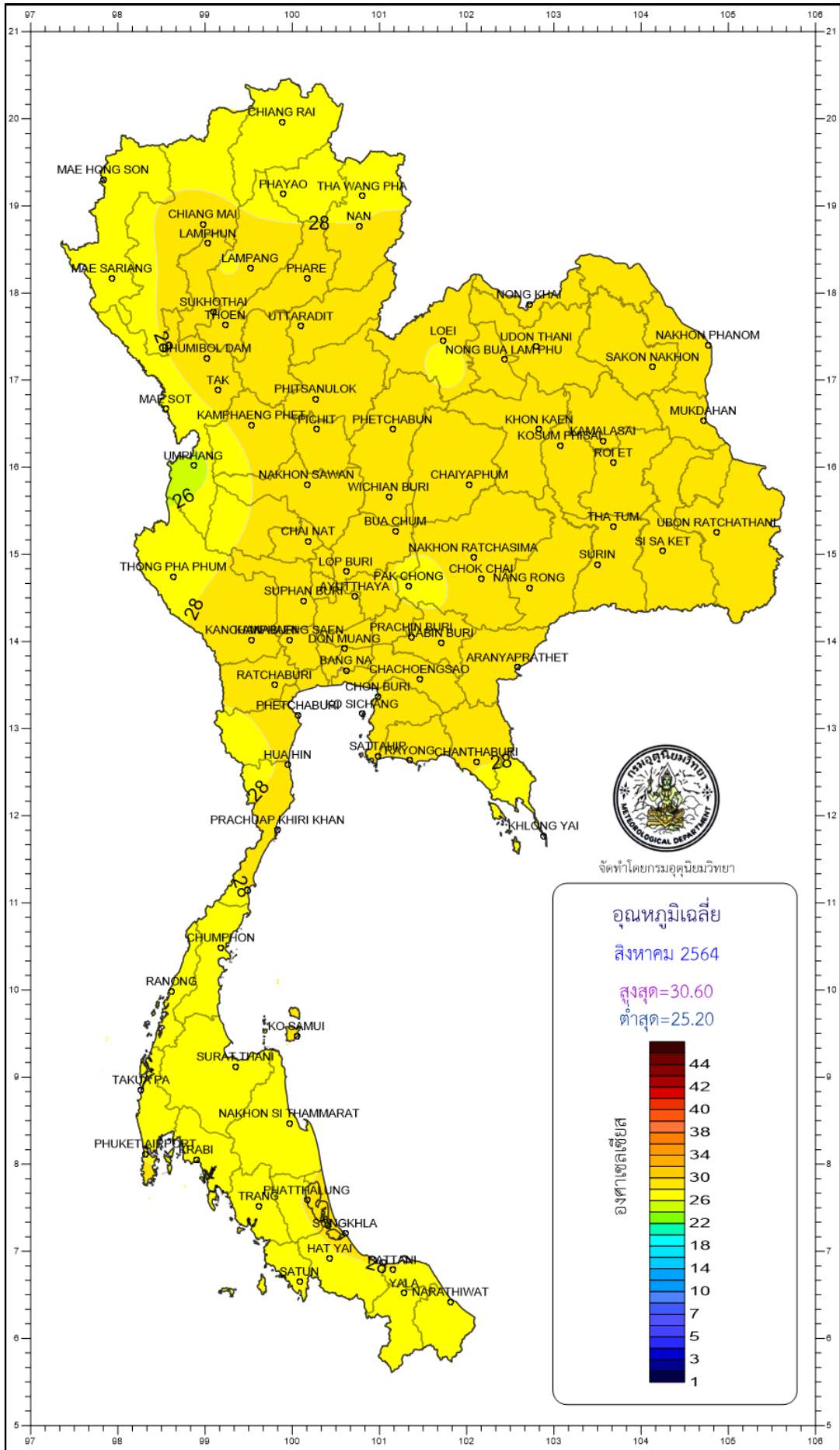
สูง-ต่ำกว่าค่าปกติ

สิงหาคม 2564

สูงสุด=231.00

ต่ำสุด=-77.10





Map of Thailand showing monthly precipitation (มกราคม 2564) with a color scale from 1 to 44 mm. The map includes province names and a legend box with the title 'อุณหภูมิเฉลี่ย' and values 'สูงสุด=30.60' and 'ต่ำสุด=25.20'.

